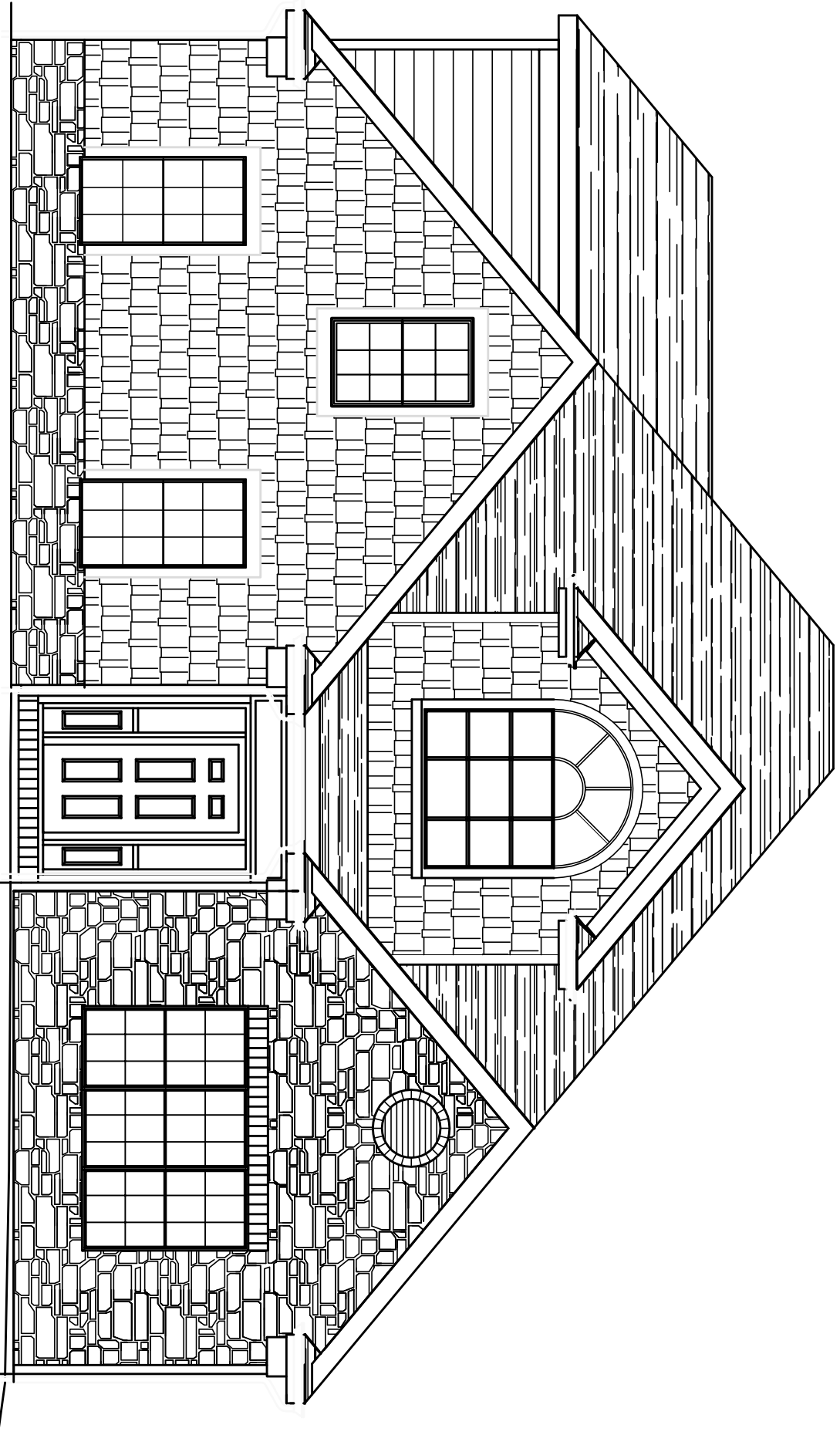


THE WATERFORD

III

MAY 17, 2006



SQUARE FOOTAGE:

FIRST FLOOR:

2286 SF

SECOND FLOOR:

1030 SF

TOTAL FINISHED:

3316 SF

GARAGE:

506 SF

SCREENED PORCH:

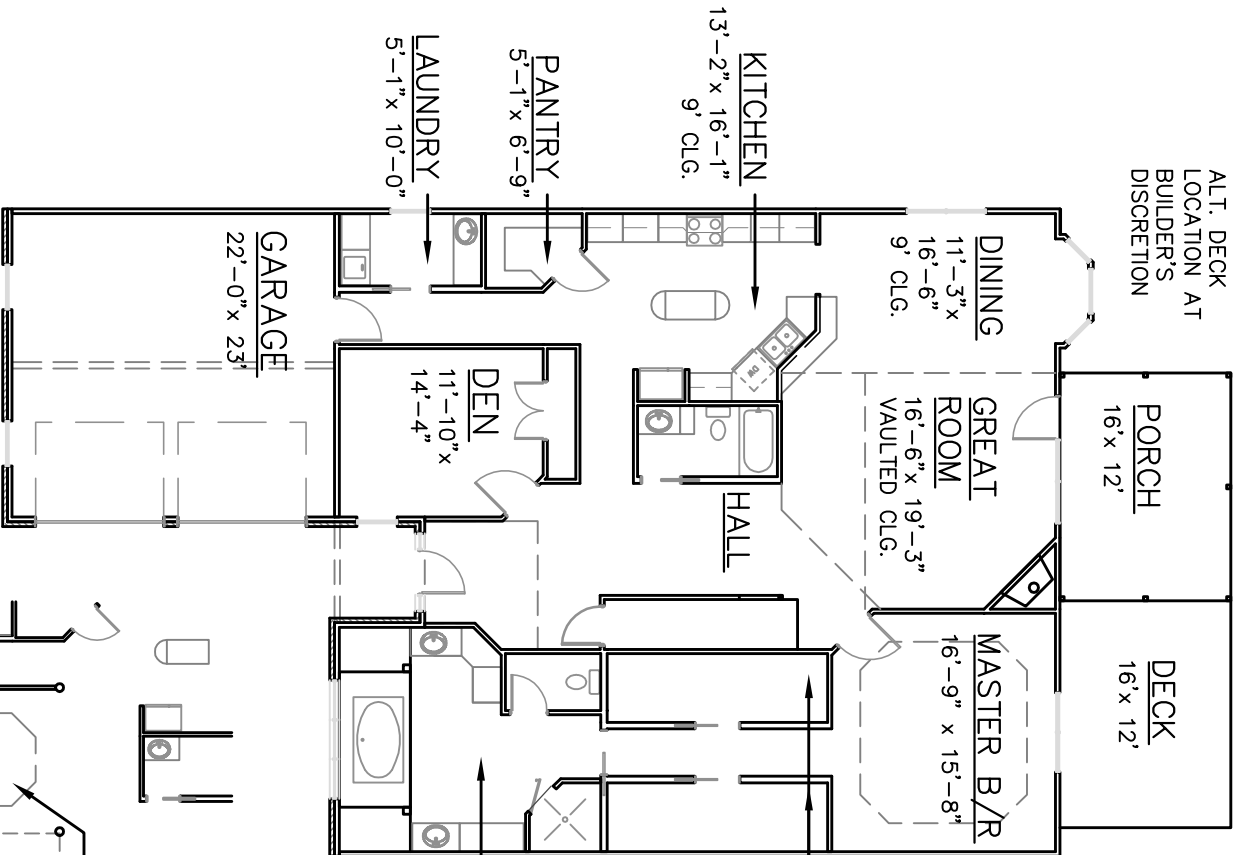
192 SF

THE WATERFORD

III

OPTION #1

ALT. DECK
LOCATION AT
BUILDER'S
DISCRETION



FIRST FLOOR OPTIONS

MAY 17, 2006

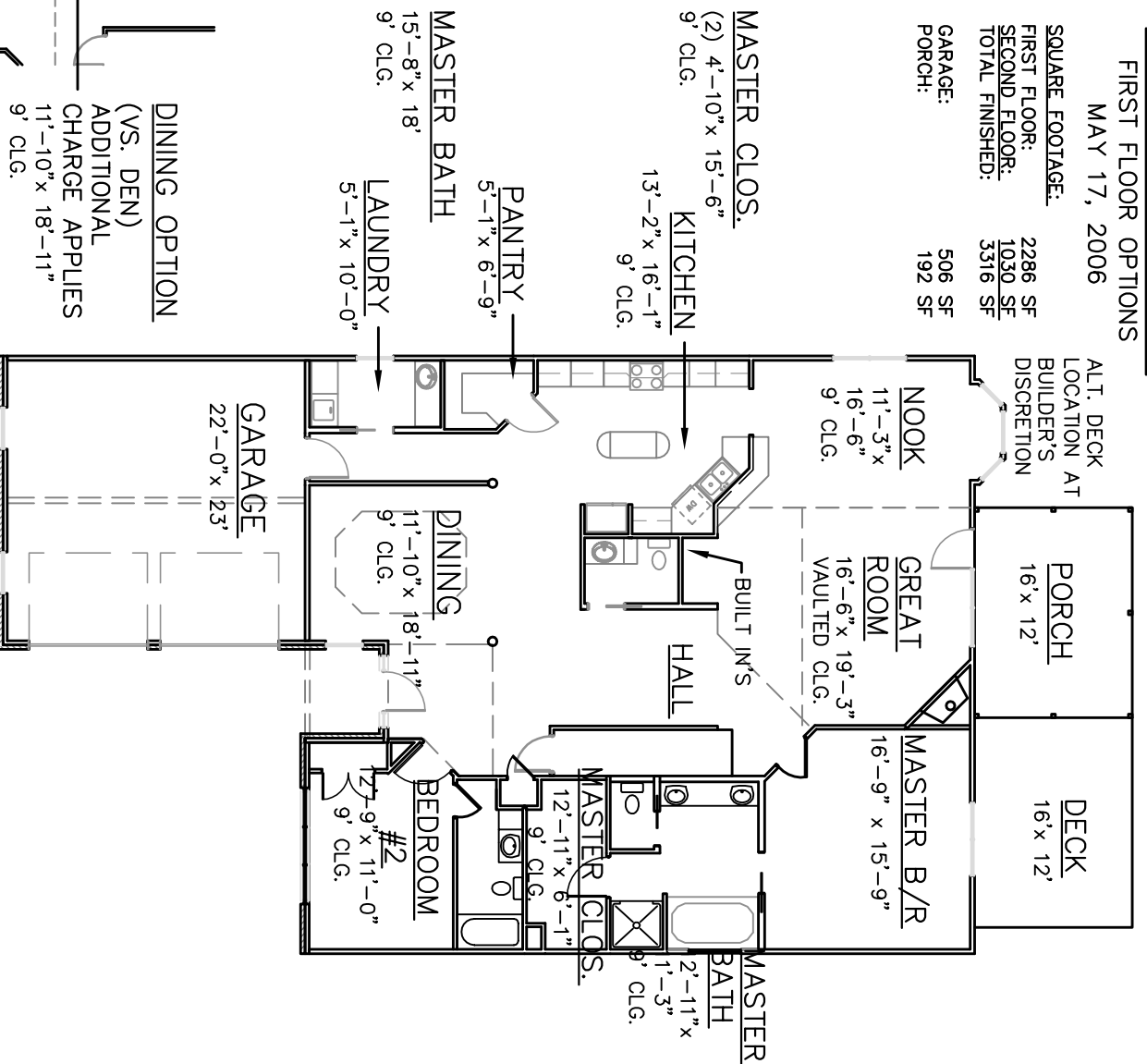
SQUARE FOOTAGE:
 FIRST FLOOR: 2286 SF
 SECOND FLOOR: 1030 SF
 TOTAL FINISHED: 3316 SF

GARAGE: 506 SF
PORCH: 192 SF

OPTION #2

ADDITIONAL CHARGE APPLIES

ALT. DECK
LOCATION AT
BUILDER'S
DISCRETION



DINING OPTION

(VS. DEN)
 ADDITIONAL
 CHARGE APPLIES
 11'-10" x 18'-11"
 9' CLG.

THE WATERFORD III

SECOND FLOOR

MAY 17, 2006

SQUARE FOOTAGE:

FIRST FLOOR: 2286 SF

SECOND FLOOR: 1030 SF

TOTAL FINISHED: 3316 SF

GARAGE: 506 SF

PORCH: 192 SF

